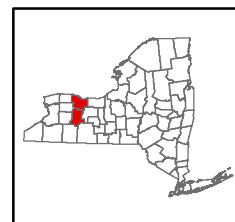


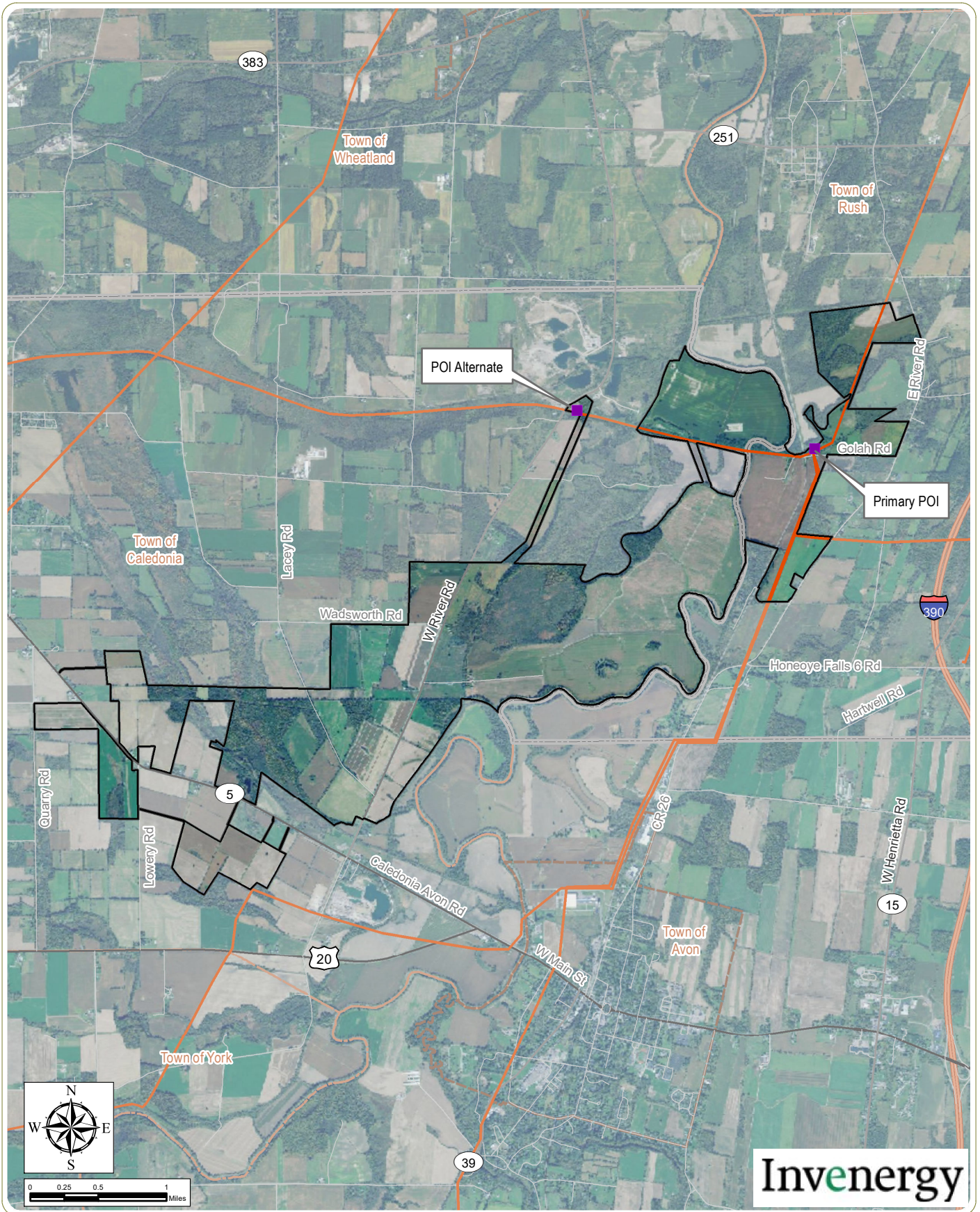
**Horseshoe Solar Project**

Towns of Caledonia and Rush, Livingston and Monroe Counties, New York  
 Preliminary Scoping Statement - Case No. 18-F-0633

**Figure 1: Regional Facility Location - Rev. 1**

**Notes:** 1. Basemap: ESRI ArcGIS Online "World Shaded Relief" mapping service. 2. This map was generated in ArcMap on October 7, 2019. 3. This is a color graphic. Reproduction in grayscale may misrepresent the data.





### Horseshoe Solar Project

Towns of Caledonia and Rush, Livingston and Monroe Counties, New York  
 Preliminary Scoping Statement - Case No. 18-F-0633

**Figure 2: Preliminary Facility Site - Rev. 1**

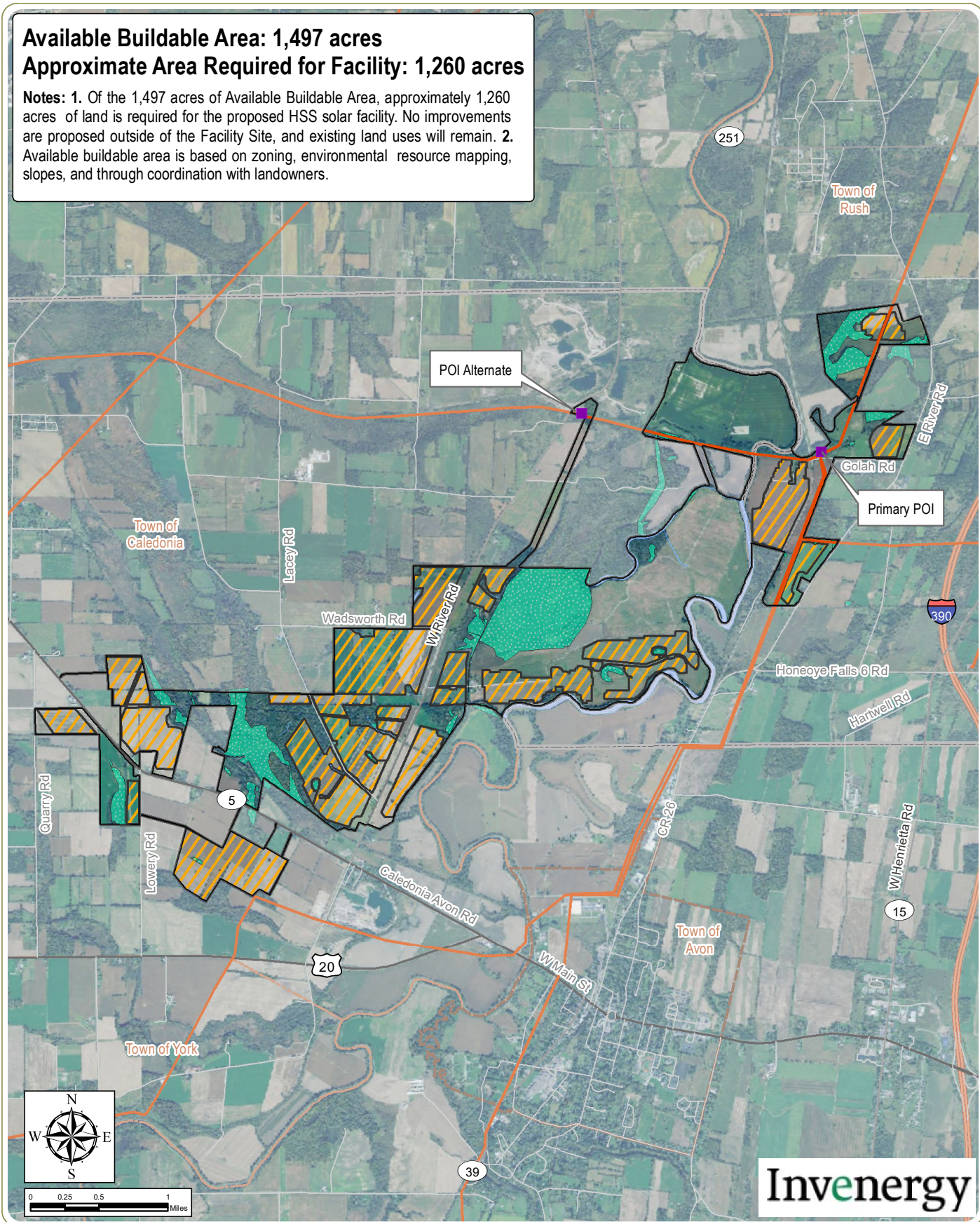
**Notes:** 1. Basemap:USDA NAIP "2017 New York 1 m" orthoimagery map service. 2. This map was generated in ArcMap on October 7, 2019. 3. This is a color graphic. Reproduction in grayscale may misrepresent the data.

- Potential POI Location
- Existing Transmission Line
- Facility Site
- Town Boundary



**Available Buildable Area: 1,497 acres**  
**Approximate Area Required for Facility: 1,260 acres**

**Notes:** 1. Of the 1,497 acres of Available Buildable Area, approximately 1,260 acres of land is required for the proposed HSS solar facility. No improvements are proposed outside of the Facility Site, and existing land uses will remain. 2. Available buildable area is based on zoning, environmental resource mapping, slopes, and through coordination with landowners.



**Horseshoe Solar Project**

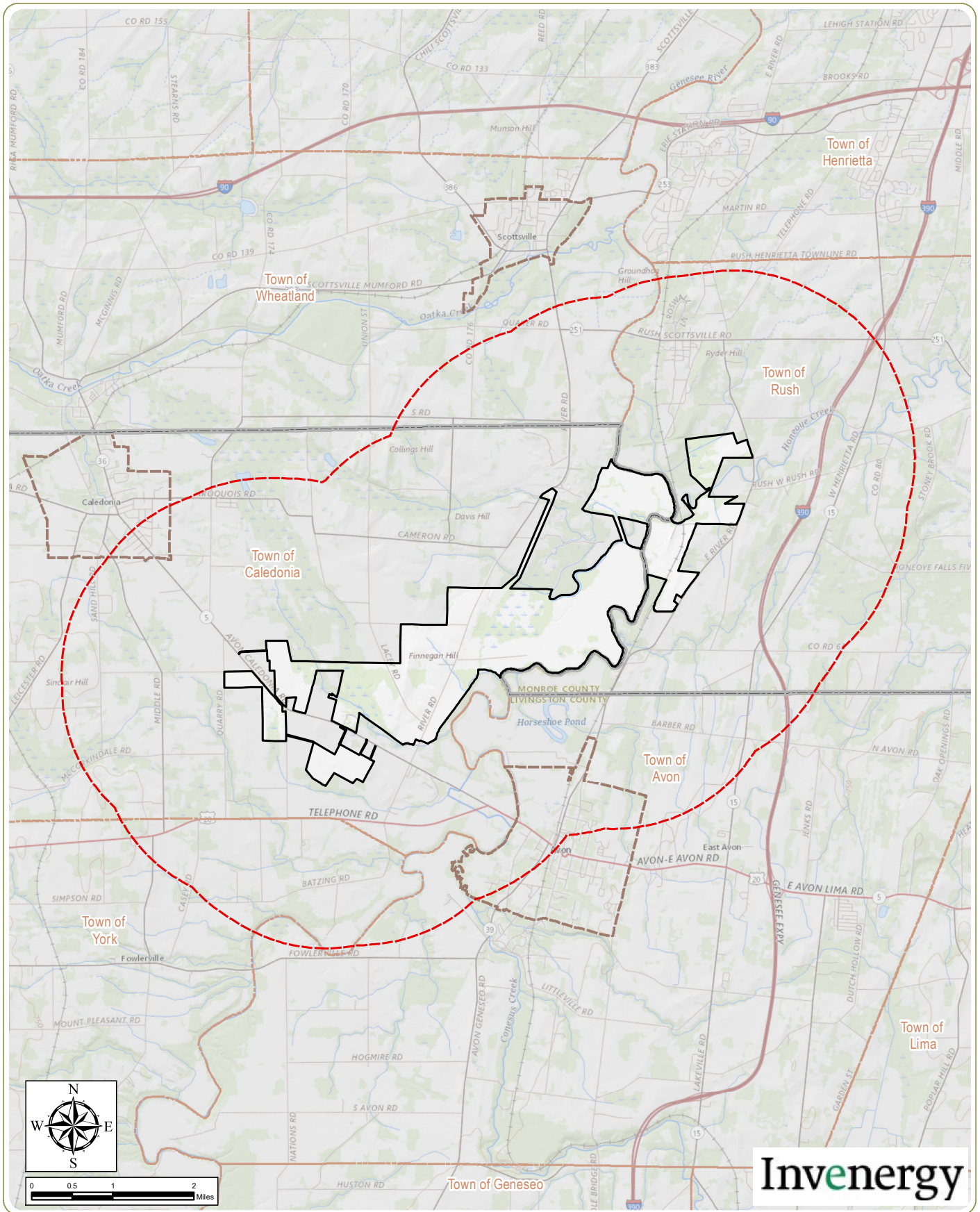
Towns of Caledonia and Rush, Livingston and Monroe Counties, New York  
 Preliminary Scoping Statement - Case No. 18-F-0633

**Figure 3: Preliminary Buildable Area - Rev. 1**

**Notes:** 1. Basemap:USDA NAIP "2017 New York 1 m" orthoimagery map service. 2. This map was generated in ArcMap on October 7, 2019. 3. This is a color graphic. Reproduction in grayscale may misrepresent the data.

- Potential POI Location
- ▭ Facility Site
- Existing Transmission Line
- - - Town Boundary
- ▨ Available Buildable Area
- ▤ Delineated Wetland








### Horseshoe Solar Project

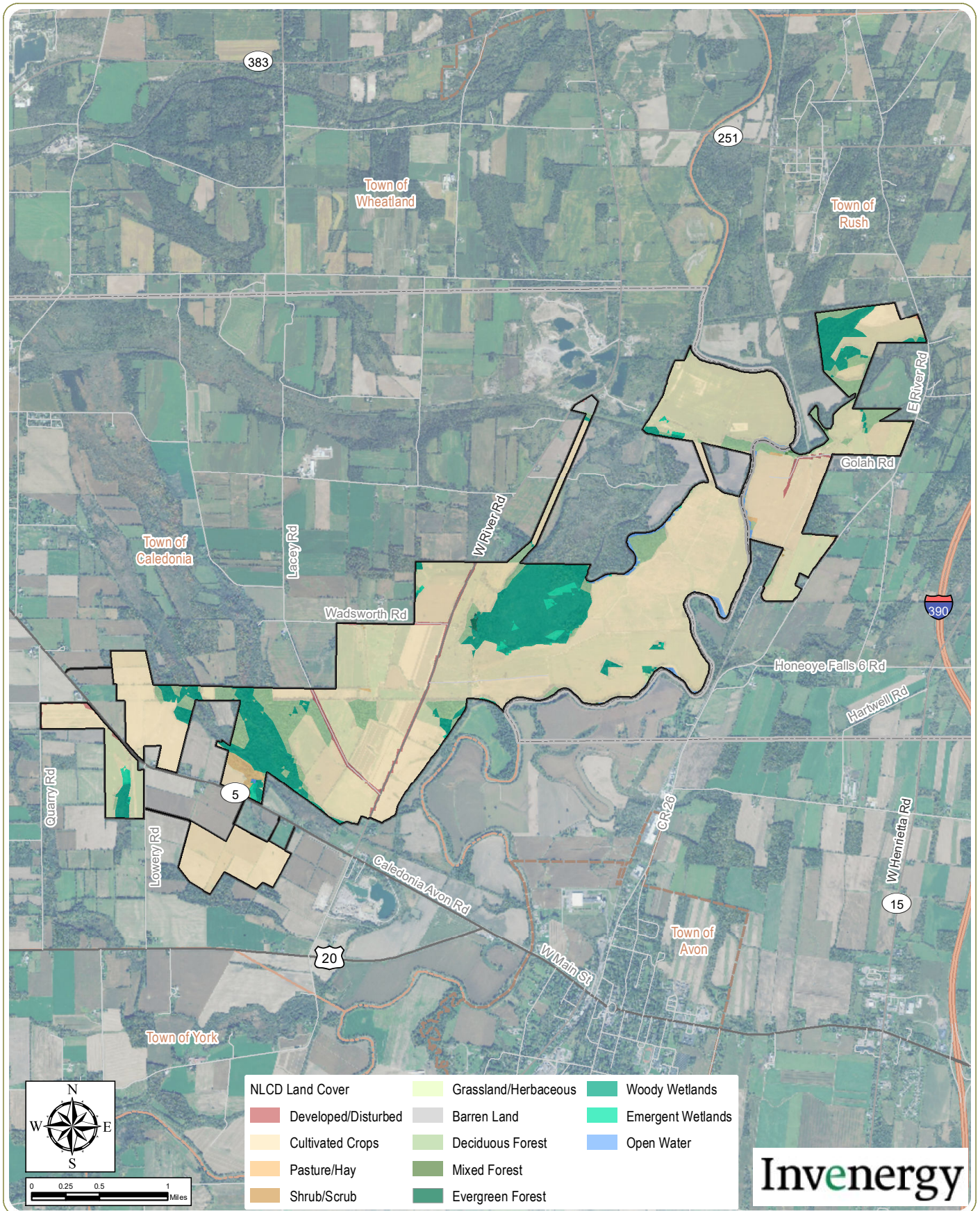
Towns of Caledonia and Rush, Livingston and Monroe Counties, New York  
 Preliminary Scoping Statement - Case No. 18-F-0633

**Figure 4: Study Area - Rev. 1**

**Notes:** 1. Basemap: ESRI ArcGIS Online "USGS Topo" map service. 2. This map was generated in ArcMap on October 7, 2019. 3. This is a color graphic. Reproduction in grayscale may misrepresent the data.

-  Facility Site
-  2 Mile Study Area
-  Town Boundary





### Horseshoe Solar Project

Towns of Caledonia and Rush, Livingston and Monroe Counties, New York  
 Preliminary Scoping Statement - Case No. 18-F-0633

**Figure 5: NLCD Land Cover - Rev. 1**

**Notes:** 1. Basemap:USGS NLCD 2016 Land Cover Conterminous United States remote sensing image. USDA NAIP "2017 New York 1m" orthoimagery map service. 2. This map was generated in ArcMap on October 7, 2019. 3. This is a color graphic. Reproduction in grayscale may misrepresent the data.

- Facility Site
- Town Boundary

